



Government of India  
Ministry of Earth Sciences  
India Meteorological Department



Press Release

Date: 01<sup>st</sup> September, 2025  
Time of Issue: 1345 hours IST

**Subject: i) Heavy to very Heavy rainfall spell likely to continue over Northwest India during next 3 days with isolated Extremely heavy rainfall ( $\geq 21$ cm) over Himachal Pradesh, Uttarakhand, West Uttar Pradesh on 01<sup>st</sup> September, 2025.**

**ii) Heavy to very heavy rainfall likely over Konkan & Goa, Madhya Maharashtra, Gujarat Region and Coastal Karnataka during 03<sup>rd</sup>-06<sup>th</sup> September with possibility of Extremely heavy rainfall at isolated places over Gujarat on 04<sup>th</sup> & 05<sup>th</sup> September, 2025.**

**Realised weather during past 24 hours till 0830 hours IST of today, the 01<sup>st</sup> September, 2025:**

- ❖ **Heavy to very heavy rainfall with Extremely heavy rainfall ( $\geq 21$  cm)** has been recorded at isolated places over Himachal Pradesh, Uttarakhand, Punjab, West Rajasthan and Telangana.
- ❖ **Very heavy rainfall (12-20 cm)** has been recorded at isolated places over Haryana, Uttar Pradesh, East Rajasthan.
- ❖ **Heavy rainfall (7-11 cm)** has been recorded at isolated places over Jammu, Chandigarh, Madhya Pradesh, Andaman & Nicobar Islands, Odisha, Chhattisgarh, Madhya Maharashtra and Gujarat Region.

For more details of realised weather, kindly refer [Annexure I](#).

**i. Weather Systems, Forecast and Warnings (refer to Annexure II & III):**

- ❖ The Monsoon trough at mean sea level runs near normal position.
- ❖ An **upper air cyclonic circulation** lay over northeast Bay of Bengal & adjoining Myanmar coast in lower & middle tropospheric levels tilting southwestwards with height. Under its influence a low pressure area is likely to form over north Bay of Bengal during next 24 hours.
- ❖ A **trough** runs from above cyclonic circulation to north coastal Odisha in lower tropospheric levels.
- ❖ An **upper air cyclonic circulation** lay over northwest Rajasthan & neighbourhood in lower & middle tropospheric levels and a trough runs from this cyclonic circulation to Jharkhand in lower tropospheric levels.

Under the influence of these systems, the following weather is likely:

**Northwest India:**

- ❖ **Extremely heavy rainfall** very likely at isolated places over Himachal Pradesh, Uttarakhand & West Uttar Pradesh on 01<sup>st</sup> September.
- ❖ Isolated **heavy rainfall** likely to continue over Jammu-Kashmir, Himachal Pradesh, Punjab, Haryana, Chandigarh during 01<sup>st</sup>-03<sup>rd</sup>; Uttarakhand & East Rajasthan during 01<sup>st</sup>-07<sup>th</sup>; Uttar Pradesh on 01<sup>st</sup> & 02<sup>nd</sup>; West Rajasthan on 01<sup>st</sup>, 02<sup>nd</sup> & during 05<sup>th</sup>-07<sup>th</sup> September with **isolated very heavy rainfall very likely over Jammu-Kashmir-Ladakh on 02<sup>nd</sup> & 03<sup>rd</sup>; Himachal Pradesh, Uttarakhand, Punjab, Haryana, Chandigarh, West Uttar Pradesh on 01<sup>st</sup> & 02<sup>nd</sup>; East Uttar Pradesh & West Rajasthan on 01<sup>st</sup>; East Rajasthan on 01<sup>st</sup>, 02<sup>nd</sup>, 05<sup>th</sup> & 06<sup>th</sup> September.**
- ❖ Light/moderate rainfall at most/many places over the region during next 7 days.

### West India:

- ❖ **Extremely heavy rainfall** very likely at isolated places over Gujarat Region on 04<sup>th</sup> & 05<sup>th</sup> September.
- ❖ **Isolated heavy rainfall** is very likely over Gujarat region, Madhya Maharashtra during next 7 days; Konkan & Goa during 01<sup>st</sup>-06<sup>th</sup>; Marathwada on 02<sup>nd</sup> & 03<sup>rd</sup>; Saurashtra & Kutch during 04<sup>th</sup> -07<sup>th</sup> September with **very heavy rainfall over Konkan & Goa, Madhya Maharashtra, Gujarat Region during 03<sup>rd</sup>-06<sup>th</sup>; Saurashtra & Kutch on 05<sup>th</sup> & 06<sup>th</sup> September.**
- ❖ Light to moderate rainfall accompanied with thunderstorm & lightning at a few/many places very likely over the region during next 7 days.

### East & Central India:

- ❖ Isolated **heavy rainfall** likely over West Madhya Pradesh, Chhattisgarh during next 5 days; East Madhya Pradesh during 01<sup>st</sup>-06<sup>th</sup>; Vidarbha during 01<sup>st</sup>-04<sup>th</sup>; Andaman & Nicobar Islands on 01<sup>st</sup>; West Bengal & Sikkim on 02<sup>nd</sup> & 03<sup>rd</sup>; Jharkhand on 02<sup>nd</sup>; Odisha during 02<sup>nd</sup>-05<sup>th</sup> September with isolated **very heavy rainfall over Vidarbha, Chhattisgarh & Odisha on 02<sup>nd</sup> & 03<sup>rd</sup>; Gangetic West Bengal on 02<sup>nd</sup>; East Madhya Pradesh on 03<sup>rd</sup>; West Madhya Pradesh on 04<sup>th</sup> & 05<sup>th</sup> September.**
- ❖ Light to moderate rainfall at most/many places accompanied with thunderstorm & lightning likely over the region during next 7 days.

### Northeast India:

- ❖ Isolated **heavy rainfall** likely to continue over Assam & Meghalaya during 01<sup>st</sup>-06<sup>th</sup>; Nagaland, Manipur, Mizoram & Tripura during 01<sup>st</sup>-05<sup>th</sup> and Arunachal Pradesh on 06<sup>th</sup> & 07<sup>th</sup> September.
- ❖ Light/moderate rainfall at many places accompanied with thunderstorm & lightning likely during next 7 days.

### South Peninsular India:

- ❖ Isolated **heavy rainfall** likely over Kerala & Mahe during 03<sup>rd</sup>-06<sup>th</sup>; Coastal Andhra Pradesh & Yanam during 01<sup>st</sup>-03<sup>rd</sup>; Coastal Karnataka during 01<sup>st</sup>-07<sup>th</sup>; South Interior Karnataka on 03<sup>rd</sup> September with isolated **very heavy rainfall over Coastal Andhra Pradesh & Yanam on 02<sup>nd</sup> and Telangana during 01<sup>st</sup>-03<sup>rd</sup> September.**
- ❖ Light to moderate rainfall accompanied with thunderstorm & lightning at a few places likely over the region during next 7 days.

### Fishermen warning:

Fishermen are advised not to venture into the following from 01<sup>st</sup> to 06<sup>th</sup> September 2025 to the following Areas:

#### Arabian Sea (AS):

Along and off the Somalia, Oman coasts and adjoining sea areas, most parts of central AS and adjoining and many areas of southwest Arabian Sea during 01<sup>st</sup> to 06<sup>th</sup> September; over Lakshadweep on 02<sup>nd</sup> to 05<sup>th</sup> September; along and off south Gujarat on 01<sup>st</sup> September, entire Gujarat coast on 04<sup>th</sup> & 05<sup>th</sup> September; Konkan, Goa coasts during 01<sup>st</sup> to 05<sup>th</sup> September; along and off north Konkan coast on 05<sup>th</sup> September; along and off Karnataka coast during 02<sup>nd</sup> to 05<sup>th</sup> September; along and off Kerala coast during 03<sup>rd</sup> to 5<sup>th</sup> September.

#### Bay of Bengal (BoB):

Long and off Andhra Pradesh coast during 01<sup>st</sup> to 06<sup>th</sup> September; Odisha, West Bengal coasts during 01<sup>st</sup> to 04<sup>th</sup> September; Bangladesh, Myanmar coasts during 01<sup>st</sup> to 03<sup>rd</sup> September; most parts of central, south Bay of Bengal during 01<sup>st</sup> to 06<sup>th</sup> September; most parts of northwest Bay of Bengal on 03<sup>rd</sup> September; entire north Bay of Bengal during 01<sup>st</sup> to 03<sup>rd</sup> September; over Gulf of Mannar & adjoining Comorin area during 01<sup>st</sup> to 06<sup>th</sup> September; over Andaman Sea during 01<sup>st</sup> to 04<sup>th</sup> September.

## ii. Weather conditions and forecast over Delhi/NCR during 01<sup>st</sup> September to 04<sup>th</sup> September 2025 (Annexure IV)

For more details, kindly refer **National Weather Bulletin:**

[https://mausam.imd.gov.in/responsive/all\\_india\\_forecast\\_bulletin.php](https://mausam.imd.gov.in/responsive/all_india_forecast_bulletin.php)

For District wise warnings refer: <https://mausam.imd.gov.in/responsive/districtWiseWarningGIS.php>

For Fishermen warning refer <https://rsmcnewdelhi.imd.gov.in/fishermen-warning.php>

**Rainfall recorded (in cm) during past 24 hours till 0830 hours IST of today, the 01<sup>st</sup> September:**

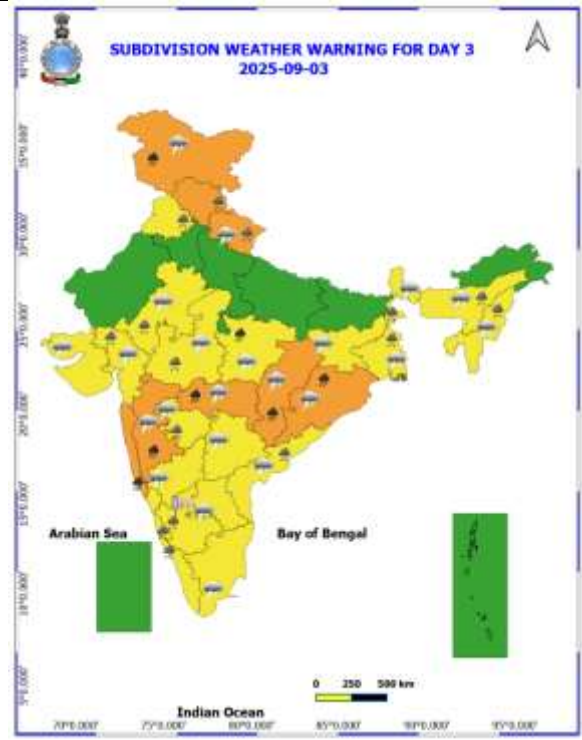
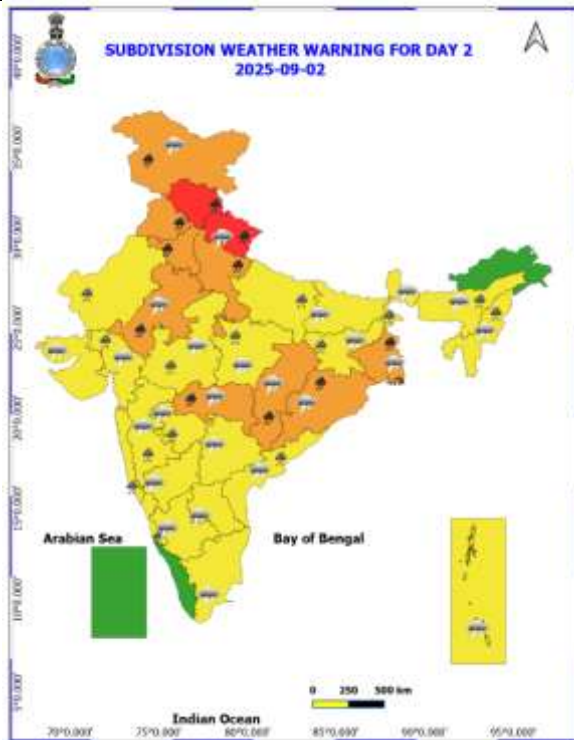
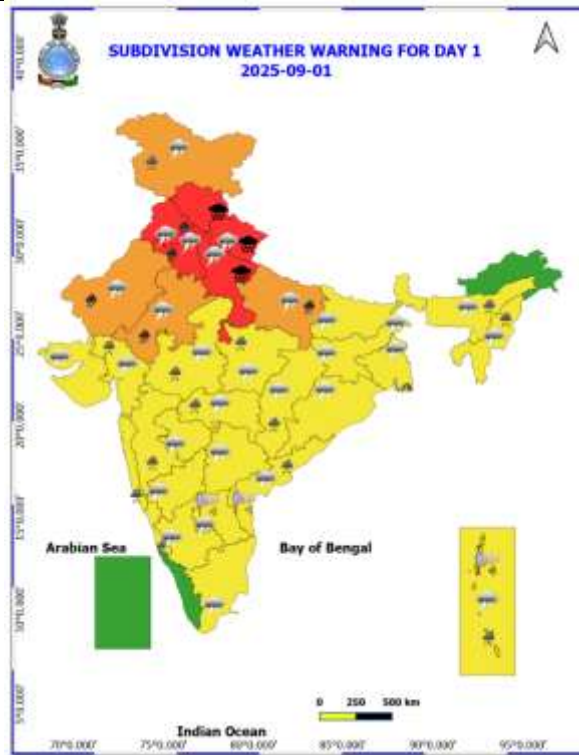
- ❖ **Uttarakhand: Banbasa (dist Champawat) 26**, Khatima (dist Udham Singh Nagar) 18, Chakrata (dist Dehradun) 13, Purola (dist Uttarkashi) 12, Keertinagar (dist Garhwal Tehri) 9, Haripur (dist Dehradun) 9, Mussoorie (dist Dehradun) 8, Champawat (dist Champawat) 8, Mukteshwar (dist Nainital) 8, Jollygrant (dist Dehradun) 7, Barkot (dist Uttarkashi) 7;
- ❖ **Telangana: Khammam Urban (dist Khammam) 23**, Kothagudem (dist B. Kothagudem) 19, Yellandu (dist B. Kothagudem) 15, Mallapur (dist Jagtial) 12, Palawanacha (dist B. Kothagudem) 12, Aswaraopeta (dist B. Kothagudem) 11, Vemanapalle (dist Mancherial) 11, Bayyaram (dist Mahabubabad) 10, Sathupalle (dist Khammam) 9, Khammam(arg) (dist Khammam) 9, Jainoor (dist Kumaram Bheem) 9, Mulakalapalle (dist B. Kothagudem) 9, Sarangapur (dist Jagtial) 9, Chennaraopet (dist Warangal) 9, Kotapalle (dist Mancherial) 8, Gudurwrgl (dist Mahabubabad) 8, Dornakal (dist Mahabubabad) 8, Thollada (dist Khammam) 7, Belampalle (dist Mancherial) 7, Madhira (dist Khammam) 7, Chandrugonda (dist B. Kothagudem) 7, Bheemini (dist Mancherial) 7, Julurpad (dist B. Kothagudem) 7, Tekulapalle (dist B. Kothagudem) 7, Konijerla (dist Khammam) 7, Kagaznagar (dist Kumaram Bheem) 7, Nallabelly (dist Warangal) 7, Sirpuru (dist Kumaram Bheem) 7, Narsampet (dist Warangal) 7;
- ❖ **Himachal Pradesh: R L Bmb (dist Bilaspur) 22**, Pachhad (dist Sirmaur) 20, Naina Davi (dist Bilaspur) 19, Solan (dist Solan) 19, Nahan (dist Sirmaur) 18, Jatton Barrage (dist Sirmaur) 17, Kasauli (dist Solan) 13, Sangraha (dist Sirmaur) 13, Renuka / Dadhau (dist Sirmaur) 13, Rohru (dist Shimla) 13, Dharampur (dist Solan) 13, Una (dist Una) 12, Simla (dist Shimla) 12, Paonta (dist Sirmaur) 11, Kandaghat (dist Solan) 11, Shimla Aero (dist Shimla) 11, Barthin (dist Bilaspur) 10, Kufri (dist Shimla) 9, Karsog (dist Mandi) 8, Bilaspur Sadar (dist Bilaspur) 8, Narkanda Aws (dist Shimla) 7, Aghar (dist Hamirpur) 7, Kahu (dist Bilaspur) 7, Shillaro (dist Shimla) 7, Kotkhai (dist Shimla) 7;
- ❖ **Punjab: Nangal (dist Rupnagar) 22**, Jalandhar (dist Jalandhar) 20, Ropar (dist Rupnagar) 18, Kotla (dist Rupnagar) 17, Khanna (dist Ludhiana) 17, Ganguwal (dist Rupnagar) 17, Lohand (dist Rupnagar) 15, Ludhiana Irr (dist Ludhiana) 12, Ludhiana (dist Ludhiana) 12, Mallaout (dist Muktsar) 11, Bhadson Irr (dist Patiala) 11, Ballawal Saunkri (dist Sbs Nagar) 11, Bharatgarh (dist Rupnagar) 10, Balachaur Aws (dist Sbs Nagar) 10, Fatehgarh Sahib Aws (dist Fatehgarh Sahib) 10, Fatehgarh Sahib Arg (dist Fatehgarh Sahib) 10, Nawanshahr (dist Sbs Nagar) 9, Garhshankar (dist Hoshiarpur) 9, Nakodar (dist Jalandhar) 9, Amlah (dist Fatehgarh Sahib) 9, Bhakra Dam Nangal Aws (dist Rupnagar) 8, Anandpur Sahib (dist Rupnagar) 8, Patiala (dist Patiala) 8, Patiala Aws (dist Patiala) 8, Samana Arg (dist Patiala) 8, Sirhind (dist Fatehgarh Sahib) 8, Adampur Arg (dist Fatehgarh Sahib) 8, Adampur Iaf (dist Jalandhar) 7, Nabha (dist Patiala) 7, Pau Ludhiana (dist Ludhiana) 7;
- ❖ **West Rajasthan: Chamu (Jodhpur) 21**, Dungargarh (Bikaner) 15, Jalore (Jalore) 13, Jodhpur Tehsil (Jodhpur) 11, Sojat (Pali) 8, Lunkaransar (Bikaner) 7, Jodhpur (Jodhpur) 7, Nohar (Hanumangarh) 7;
- ❖ **East Uttar Pradesh: Fursatganj (dist Amethi) 17**, Banda (dist Banda) 8, Manikpur (dist Chitrakoot) 8, Beberu (dist Banda) 8, Ram Sanehi Ghat Tehsil (dist Barabanki) 7, Gonda Cwc (dist Gonda) 7, Gonda Sadar (dist Gonda) 7;
- ❖ **East Rajasthan: Asnawar (Jhalawar) 16**, Chhoti sadri (Pratapgarh) 14, Jhalra patan (Jhalawar) 13, Todabhim (Karauli) 11, Buhana (Jhunjhunu) 10, Malsisar (Jhunjhunu) 10, Bheem (Rajsamand) 9, Thanagaji (Alwar) 9, Ajmer (Ajmer) 9, Sagwara (Dungarpur) 9, Karauli (Karauli) 8, Banera (Bhilwara) 8, Jawaja (Ajmer) 7, Arnod (Pratapgarh) 7, Sikray (Dausa) 7, Jhunjhunu (Jhunjhunu) 7, Sikar Tehsil (Sikar) 7, Shergarh (Banswara) 7, Sri madhopur (Sikar) 7, Tatgarh (Ajmer) 7, Malarna dungar (Sawai Madhopur) 7, Sarmathura (Dholpur) 7;
- ❖ **West Uttar Pradesh: Aligarh (dist Aligarh) 15**, Sambhal (dist Sambhal) 15, Sahawar (dist Kasganj) 13, Bareilly Pbo (dist Bareilly) 13, Sardhana (dist Meerut) 11, Patiyali (dist Kasganj) 9, Aonla (dist Bareilly) 9, Chandausi (dist Sambhal) 9, Sahaswan (dist Badaun) 8, Meerut (dist Meerut) 8, Maudaha (dist Hamirpur) 8, Nawabganj (dist Bareilly) 8, Shikohabad (dist Firozabad) 8, Jsrana (dist Firozabad) 8, Kasganj (dist Kasganj) 7, Gunnaur (dist Sambhal) 7, Budhana (dist Muzaffarnagar) 7, Milak (dist Rampur) 7, Chandpur (dist Bijnor) 7;
- ❖ **Haryana & Chandigarh: Sirsa (IAF) 13**, Morni (dist Panchkula) 12, Sirsa Aws (dist Sirsa) 9, Barwala Rev (dist Hisar) 9, Sirsa (dist Sirsa) 9, Jakhal Mandi Hmo (dist Fatehabad) 9, Uklana Rev (dist Hisar) 9, Fatehabad (dist Fatehabad) 8, Rajaund (dist Kaithal) 8, Sonapat (dist Sonapat) 8, Chandigarh Iaf (dist Chandigarh) 8, Tohana (dist Fatehabad) 8, Chandigarh (dist Chandigarh) 8, Chandigarh Aws (dist Chandigarh) 7, Kalka (dist Panchkula) 7, Narnaul (dist Mahendragarh) 7;
- ❖ **West Madhya Pradesh: Neemuch-aws (dist Neemuch) 11**, Barod (dist Agar-malwa) 9, Sailana (dist Ratlam) 9, Narmadapuram (dist Narmadapuram) 9, Kolaras (dist Shivpuri) 9, Raoti (dist Ratlam) 7, Budhni (dist Sehore) 7, Dhundhadaka (dist Mandsaur) 7, Jawad (dist Neemuch) 7, Dolariya (dist Narmadapuram) 7;

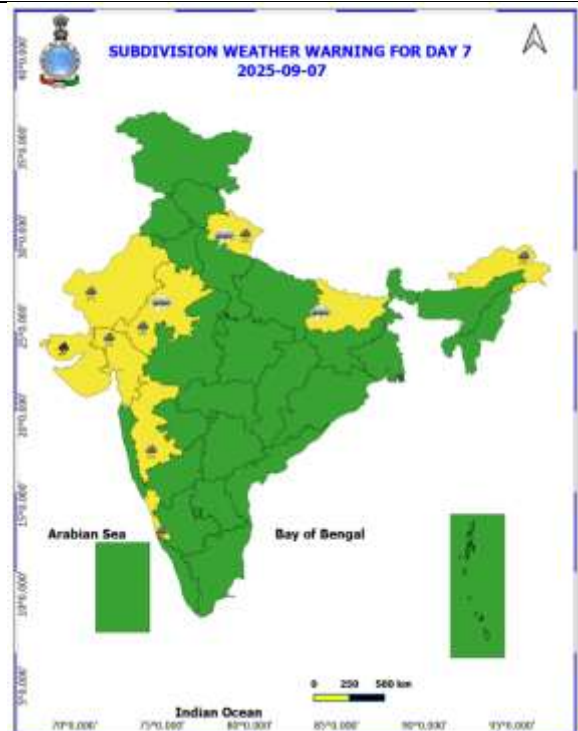
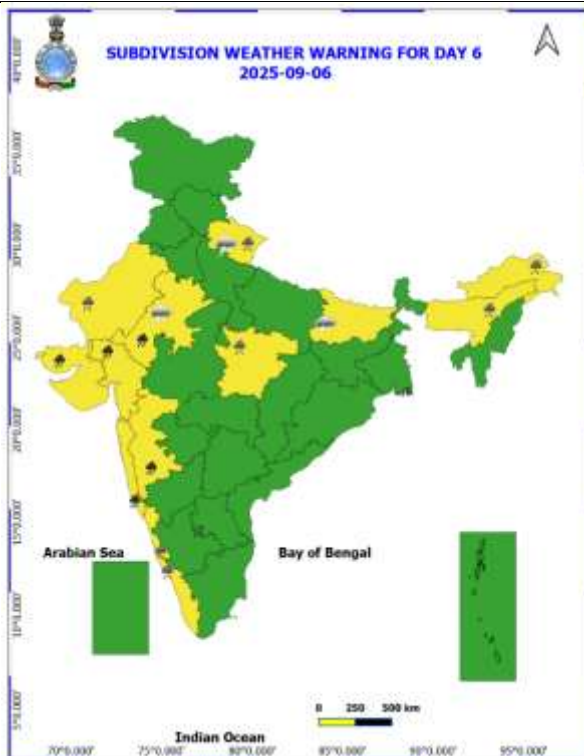
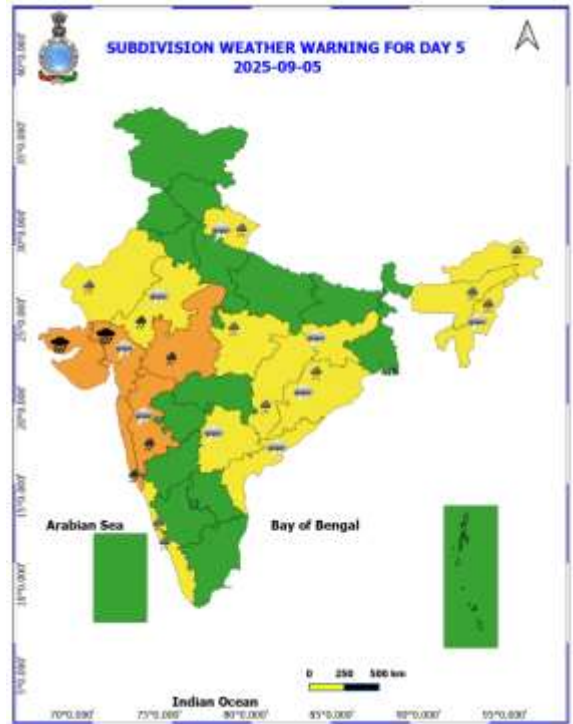
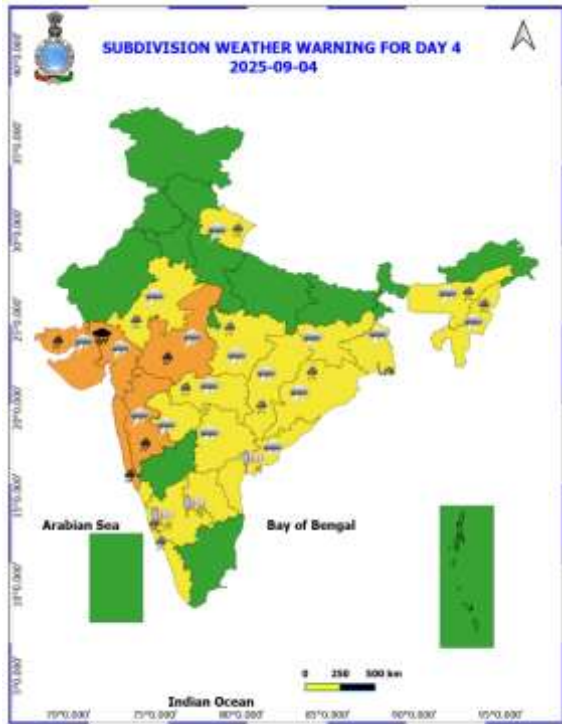
- ❖ **East Madhya Pradesh:** Narsinghpur-aws (dist Narsinghpur) 10, Satna (raghurajnagar) (dist Satna) 10, Barghat (dist Seoni) 9, Ghansore (dist Seoni) 9, Nagode (dist Satna) 8;
- ❖ **Odisha:** Bandhugaon (dist Koraput) 10, Banki (dist Cuttack) 9, Naraj (dist Cuttack) 9, Mundali (dist Cuttack) 7;
- ❖ **Gujarat Region:** Kadana (dist Mahisagar) 9, Fatepura (dist Dahod) 7;
- ❖ **Madhya Maharashtra:** Gaganbawada (dist Kolhapur) 8, Mahabaleshwar- Imd Obsy (dist Satara) 7;
- ❖ **Jammu:** Jammu Aws (dist Jammu) 7, Jammu (dist Jammu) 7, Jammu Aero (dist Jammu) 7;
- ❖ **Andaman & Nicobar Islands:** Long Island (dist North & Middle Andaman) 7;
- ❖ **Chhattisgarh:** Konta (dist Sukma) 7.

## ANNEXURE II

Table-1								
7 Days Rainfall Forecast								
S.No.	Subdivision	1- Sep	2- Sep	3- Sep	4- Sep	5- Sep	6- Sep	7- Sep
		Day 1	Day 2	Day 3	Day 4	Day 5	Day 6	Day 7
1	ANDAMAN & NICOBAR ISLANDS	WS	WS	WS	FWS	FWS	WS	WS
2	ARUNACHAL PRADESH	ISOL	SCT	SCT	SCT	SCT	FWS	FWS
3	ASSAM & MEHGHALAYA	SCT	SCT	SCT	FWS	FWS	FWS	FWS
4	NAGALAND, MANIPUR, MIZORAM AND TRIPURA	SCT	FWS	FWS	FWS	SCT	SCT	SCT
5	SUB HIMALAYAN WEST BENGAL & SIKKIM	FWS	FWS	WS	FWS	FWS	FWS	FWS
6	GANGETIC WEST BENGAL	WS	WS	WS	FWS	FWS	SCT	SCT
7	ODISHA	FWS	WS	WS	FWS	FWS	SCT	SCT
8	JHARKHAND	SCT	FWS	FWS	FWS	FWS	SCT	SCT
9	BIHAR	ISOL	SCT	ISOL	ISOL	SCT	SCT	SCT
10	EAST UTTAR PRADESH	FWS	SCT	ISOL	ISOL	SCT	ISOL	ISOL
11	WEST UTTAR PRADESH	WS	FWS	SCT	SCT	SCT	SCT	ISOL
12	UTTARAKHAND	WS	WS	FWS	FWS	FWS	FWS	FWS
13	HARYANA, CHANDIGARH & DELHI	WS	FWS	FWS	SCT	SCT	SCT	SCT
14	PUNJAB	WS	FWS	SCT	ISOL	ISOL	ISOL	ISOL
15	HIMACHAL PRADESH	WS	WS	FWS	SCT	SCT	SCT	SCT
16	JAMMU AND KASHMIR AND LADAKH	FWS	WS	WS	ISOL	ISOL	ISOL	SCT
17	WEST RAJASTHAN	FWS	SCT	SCT	SCT	FWS	FWS	FWS
18	EAST RAJASTHAN	WS	FWS	FWS	FWS	FWS	FWS	FWS
19	WEST MADHYA PRADESH	WS	WS	WS	FWS	FWS	FWS	SCT
20	EAST MADHYA PRADESH	WS	WS	WS	WS	FWS	FWS	FWS
21	GUJRAT REGION	WS	WS	WS	WS	WS	WS	WS
22	SAURASHTRA & KUTCH	SCT	SCT	SCT	FWS	WS	WS	FWS
23	KONKAN & GOA	WS	WS	WS	WS	WS	WS	WS
24	MADHYA MAHARASHTRA	SCT	SCT	FWS	FWS	FWS	SCT	SCT
25	MARATHWADA	SCT	FWS	FWS	FWS	SCT	ISOL	ISOL
26	VIDARBHA	WS	WS	WS	WS	FWS	FWS	SCT
27	CHHATTISGARH	WS	WS	WS	FWS	FWS	FWS	FWS
28	COASTAL ANDHRA PRADESH	FWS	WS	FWS	SCT	SCT	ISOL	ISOL
29	TELANGANA	FWS	FWS	FWS	FWS	SCT	SCT	SCT
30	RAYALASEEMA	SCT	SCT	ISOL	ISOL	ISOL	ISOL	ISOL
31	TAMILNADU & PUDUCHERRY	SCT	ISOL	ISOL	ISOL	ISOL	ISOL	ISOL
32	COSTAL KARNATAKA	WS	WS	WS	WS	WS	WS	WS
33	NORTH INTERIOR KARNATAKA	FWS	FWS	FWS	SCT	SCT	SCT	SCT
34	SOUTH INTERIOR KARNATAKA	FWS	FWS	FWS	SCT	SCT	SCT	SCT
35	KERALA AND MAHE	WS	FWS	WS	WS	FWS	FWS	FWS
36	LAKSHADWEEP	FWS	SCT	FWS	FWS	SCT	SCT	SCT

- As the lead period increases forecast accuracy decrease.





- Action may be taken based on ORANGE AND REDCOLOUR warnings.
- Vulnerable regions likely urban and hilly areas action may be initiated for heavy rainfall warning.
- As the lead period increases forecast accuracy decreases.

Detailed districtwise Multi Hazard weather warning for next five days available at <https://mausam.imd.gov.in/responsive/districtWiseWarningGIS.php>

**Weather forecast over Delhi/NCR during 01<sup>st</sup> to 04<sup>th</sup> September 2025****Past Weather:**

There has been fall in the minimum temperature up to 1°C and fall in maximum temperature up to 2 - 3°C over Delhi/NCR during the past 24 hours. The maximum and minimum temperatures over Delhi were around 30 to 32°C and 22 to 25°C respectively. The minimum temperature was below normal up to 1 - 3°C and maximum temperature was below normal up to 2 - 5°C. Generally cloudy sky conditions with predominant surface wind from the east/southeast direction with wind speeds up to 16 kmph prevailed during the past 24 hours. Generally cloudy sky conditions with a wind speed of less than 14 kmph from the southeast direction prevailed over the region in the forenoon today.

**Weather Forecast:**

**01.09.2025:** Generally cloudy sky. One or two spells of very light to light rain/thundershowers likely at many places with possibility of moderate rain at isolated places during afternoon and evening. The maximum temperatures over Delhi are likely to be in the range of 28 to 30°C. The maximum temperature will be below normal up to 4 to 6°C. The predominant surface wind will likely be from the southeast direction with a wind speed of up to 20-25 kmph during the afternoon hours. The wind speed will decrease becoming less than 20 kmph from the southeast direction during the evening and night.

**02.09.2025:** Generally cloudy sky. Possibility of one or two spells of very light to light rain/thundershowers likely at many places with moderate rain at isolated places. The maximum and minimum temperatures over Delhi are likely to be in the range of 30 to 32°C and 21 to 23°C respectively. The minimum temperature will be below normal up to 3 to 5°C and the maximum temperature will be below normal up to 2 to 4°C. The predominant surface wind will likely be from the southeast direction with a wind speed of up to 15 - 20 kmph during morning hours. The wind speed will gradually increase becoming less than 22 kmph from the southeast direction in the afternoon. The wind speed will decrease becoming less than 16 kmph from the southeast direction during the evening and night.

**03.09.2025:** Generally cloudy sky. Possibility of one or two spells of very light to light rain/thundershowers. The maximum and minimum temperatures over Delhi are likely to be in the range of 32 to 34°C and 22 to 24°C respectively. The minimum temperature will be below normal up to 2 to 4°C and the maximum temperature will be below normal up to 1 to 2°C. The predominant surface wind will likely be from the southeast direction with a wind speed of up to 10-15 kmph during morning hours. The wind speed will gradually decrease becoming less than 12 kmph from the east direction in the afternoon. The wind speed will increase becoming less than 15 kmph from the northeast direction during the evening and night.

**04.09.2025:** Generally cloudy sky. Possibility of one or two spells of very light to light rain/thundershowers. The maximum and minimum temperatures over Delhi are likely to be in the range of 32 to 34°C and 23 to 25°C respectively. The minimum temperature will be below normal up to 1 to 2°C and the maximum temperature will be below normal up to 1 to 2°C. The predominant surface wind will likely be from the northeast direction with a wind speed of less than 15 kmph during the morning hours. The wind speed will gradually increase becoming less than 18 kmph from the east direction in the afternoon. The wind speed will decrease becoming less than 15 kmph from the northeast direction during the evening and night.

**Impact expected and Action Suggested due to light to moderate rainfall with thundershowers:**

- Damage to standing crops, Minor to major damage to power and communication lines due to breaking of branches, Partial damage to vulnerable structures due to strong winds, Loose objects may fly.
- People are advised to keep a watch on the weather for worsening conditions and be ready to move to safer places accordingly, stay indoors, close windows & doors and avoid travel if possible, take safe shelters; do not take shelter under trees, do not lie on concrete floors and do not lean against concrete walls, unplug electrical/ electronic appliances, immediately get out of water bodies, keep away from all the objects that conduct electricity.

### **Impact & Action Suggested due to**

- ❖ **Extremely heavy rainfall** at isolated places over Himachal Pradesh, Uttarakhand & West Uttar Pradesh on 01<sup>st</sup>; Gujarat Region on 04<sup>th</sup> & 05<sup>th</sup> September.
- ❖ **Very heavy rainfall** over East Uttar Pradesh & West Rajasthan on 01<sup>st</sup>; Himachal Pradesh, Uttarakhand, Punjab, Haryana, Chandigarh, West Uttar Pradesh on 01<sup>st</sup> & 02<sup>nd</sup>; East Rajasthan on 01<sup>st</sup>, 02<sup>nd</sup>, 05<sup>th</sup> & 06<sup>th</sup>; Telangana during 01<sup>st</sup>-03<sup>rd</sup>; Jammu-Kashmir-Ladakh, Vidarbha, Chhattisgarh & Odisha on 02<sup>nd</sup> & 03<sup>rd</sup>; Gangetic West Bengal, Coastal Andhra Pradesh & Yanam on 02<sup>nd</sup>; East Madhya Pradesh on 03<sup>rd</sup>; Konkan & Goa, Madhya Maharashtra, Gujarat Region during 03<sup>rd</sup>-06<sup>th</sup>; West Madhya Pradesh on 04<sup>th</sup> & 05<sup>th</sup>; Saurashtra & Kutch on 05<sup>th</sup> & 06<sup>th</sup> September.

### **Impact Expected**

- Localized Flooding of roads, water logging in low lying areas and closure of underpasses mainly in urban areas of the above region.
- Occasional reduction in visibility due to heavy rainfall.
- Disruption of traffic in major cities due to water logging in roads leading to increased travel time.
- Minor damage to kutcha roads.
- Possibilities of damage to vulnerable structure.
- Localized Landslides/Mudslides/landslips/mudslips/landsinks/mudsinks.
- Damage to horticulture and standing crops in some areas due to inundation.
- It may lead to riverine flooding in some river catchments (for riverine flooding please visit Web page of CWC)

### **Action Suggested**

- Check for traffic congestion on your route before leaving for your destination.
- Follow any traffic advisories that are issued in this regard.
- Avoid going to areas that face the water logging problems often.
- Avoid staying in vulnerable structure.

### **Agromet advisories for likely impact of Heavy / Heavy to Very Heavy / Extremely Heavy Rainfall**

- In Uttarakhand, maintain proper drainage channels in fields of green gram, black gram, barnyard millet and finger millet in Sub Humid Sub Tropic Zone and rice, green gram, black gram, sugarcane, maize, groundnut, soybean, finger millet and vegetables in Bhabar and Tarai Zone. In Hill Zone, postpone sowing of vegetable pea and radish and provide proper drainage in fields of finger millet, kidney beans and vegetables.
- In Himachal Pradesh, maintain proper drainage channels in ginger, turmeric and maize fields in Mid Hills Sub Humid Zone; rice, maize and vegetable fields in Sub Montane and Low Hills Sub Tropical Zone and rajmash, potato, barley and vegetable fields in High Hill Temperate Dry Zone. In High Hills Sub Temperate Wet Zone, postpone transplanting of cabbage and cauliflower. Cover the vegetable nursery and crop with ploy sheet and ensure adequate drainage in fields of maize, finger millet and vegetables to avoid water stagnation.
- In Jammu and Kashmir, make arrangements to drain out excess rain water from fields of rice, maize, green gram and black gram in Sub Tropical Zone and maize, *kharif* pulses, rice and vegetables in Intermediate Zone.
- In Punjab, make arrangements to drain out excess water from fields of sugarcane, green gram and chilli in Undulating Plain Zone; green gram and soybean in Sub Montane Undulating Zone; cotton, maize and vegetables in Central Plain Zone; cotton and maize in Western Zone and cotton and sugarcane in Western Plain Zone.
- In Haryana, make arrangements to drain out excess water from fields of sugarcane, cotton, maize, pearl millet and vegetables in Eastern Zone and cotton, pearl millet, green gram and cluster bean in Western Zone.
- In Uttar Pradesh, make proper arrangements for drainage of excess rain water in pigeon pea and vegetables fields in Western Plain Zone and maize, pulses and oilseed crops in South Western Semi Arid Zone.
- In Rajasthan, make proper drainage arrangements in vegetable nurseries and fields of cotton, maize, soybean and pulses in Sub Humid Southern Plain and Aravali Hill Zone; vegetable nurseries and fields of standing crops such as pearl millet, black gram and sesame in Flood Prone Eastern Plain Zone and pearl millet, green gram, sesame and moth bean in Arid Western Plain Zone.



- In Madhya Pradesh, provide adequate drainage in fields of soybean, maize and vegetables in Malwa Plateau Zone; maize, soybean, green gram, black gram, pigeon pea and vegetables in Gird Zone; soybean and vegetables in Vindhyan Plateau Zone and soybean, maize, sugarcane and vegetables in Central Narmada Valley Zone.
- In Gujarat, make arrangements to drain out excess rain water from fields of rice, sugarcane, okra, tuber crops and vegetables in South Gujarat Heavy Rainfall Zone; rice, cotton, sugarcane, pigeon pea and fruit orchards (banana and mango) in South Gujarat Zone and rice, pearl millet, pigeon pea, cotton, soybean, maize and castor in Middle Gujarat Zone.
- In Maharashtra, make arrangements to drain out excess water from fields of rice, finger millet, turmeric, groundnut, vegetables and fruit orchards in Konkan; rice, maize, groundnut, soybean, vegetable fields and fruit orchards in *ghat* areas of Madhya Maharashtra and cotton, pigeon pea, soybean, vegetables and fruit orchards in Vidarbha.
- In Chhattisgarh, ensure proper drainage in fields of rice, minor millets, maize, pulses and oilseeds in Bastar Plateau Zone.
- In Odisha, make provision for draining out excess rain water from fields of rice, black gram, green gram, pigeon pea, maize, groundnut and vegetables in Eastern Ghat High Land Zone and South Eastern Ghat Zone and rice, maize, pigeon pea, and vegetables in North Eastern Ghat Zone and rice, cotton, pigeon pea and maize in Western Undulating Zone.
- In Telangana, drain out excess water from fields of rice, cotton, maize, soybean, pigeon pea, turmeric and vegetables in Northern Telangana Zone and rice, cotton, soybean, maize and pigeon pea in Southern Telangana Zone.

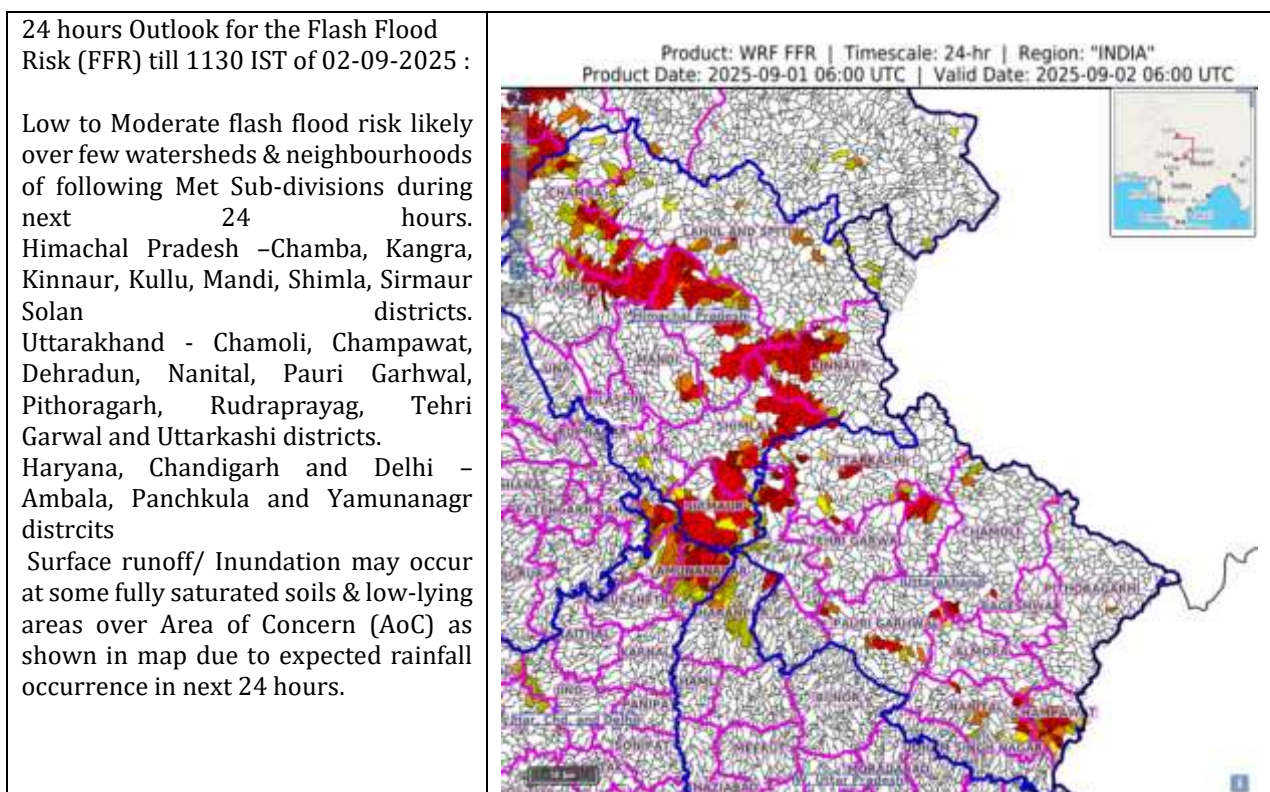
#### Livestock / Fishery

- Keep the animals inside the shed during heavy rainfall and provide them balanced feed.
- Store feed and fodder in a safe place to prevent spoilage.
- Construct an outlet with proper netting around the ponds to drain out excess water, thereby preventing fish from escaping in case of overflow.

#### Agromet advisories for likely impact of Thunderstorm / Gusty Winds / Squally Winds

- Provide mechanical support to horticultural crops and staking or support to vegetables and young fruit plants / fruit-bearing plants to avoid lodging due to strong winds.

#### Flash flood guidance:

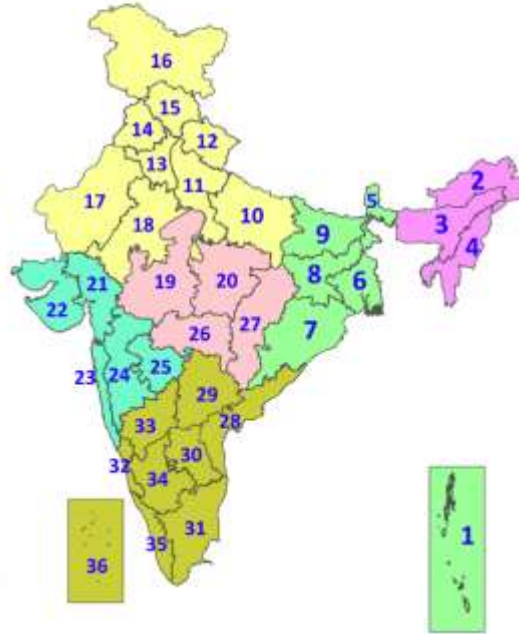


**Legends & abbreviations:**

- ❖ **Heavy Rain:**64.5-115.5mm; **Very Heavy Rain:**115.6-204.4mm; **Extremely Heavy Rain:** >204.4mm.
- ❖ **Obsy:** Observatory; Automatic Weather Station; **ARG:** Automatic Rain Gauge; **dist:** District; **NH:** National Highway; **KVK:** Krishi Vigyan Kendra; **DVC:** Damodar Valley Corporation; **PTO:** Part Time Office, **Aero:** Aerodrome, **IAF:** Indian Air Force.
- ❖ **Region wise classification of meteorological Sub-Divisions:**
  - **Northwest India:** Western Himalayan Region (Jammu-Kashmir-Ladakh-Gilgit-Baltistan-Muzaffarabad, Himachal Pradesh and Uttarakhand); Punjab, Haryana-Chandigarh-Delhi; West Uttar Pradesh, East Uttar Pradesh, West Rajasthan and East Rajasthan.
  - **Central India:** West Madhya Pradesh, East Madhya Pradesh, Vidarbha and Chhattisgarh.
  - **East India:** Bihar, Jharkhand, Sub-Himalayan West Bengal & Sikkim; Gangetic West Bengal, Odisha and Andaman & Nicobar Islands.
  - **Northeast India:** Arunachal Pradesh, Assam & Meghalaya and Nagaland, Manipur, Mizoram & Tripura.
  - **West India:** Gujarat Region, Saurashtra & Kutch, Konkan & Goa, Madhya Maharashtra and Marathawada.
  - **South India:** Coastal Andhra Pradesh & Yanam, Telangana, Rayalaseema, Coastal Karnataka, North Interior Karnataka, South Interior Karnataka, Kerala & Mahe, Tamil Nadu, Puducherry & Karaikal and Lakshadweep.

## LEGENDS

1. अंडमान और निकोबार द्वीपसमूह
2. अरुणाचल प्रदेश
3. असम और मेघालय
4. नागालैंड, मणिपुर, मिजोरम और त्रिपुरा
5. उप-हिमालयी पश्चिम बंगाल और सिक्किम
6. गंगीय पश्चिम बंगाल
7. ओडिशा
8. झारखंड
9. बिहार
10. पूर्वी उत्तर प्रदेश
11. पश्चिम उत्तर प्रदेश
12. उत्तराखंड
13. हरियाणा, चंडीगढ़ और दिल्ली
14. पंजाब
15. हिमाचल प्रदेश
16. जम्मू और कश्मीर और लद्दाख
17. पश्चिम राजस्थान
18. पूर्वी राजस्थान
19. पश्चिम मध्य प्रदेश
20. पूर्वी मध्य प्रदेश
21. गुजरात
22. सौराष्ट्र
23. कोंकण और गोवा
24. मध्य महाराष्ट्र
25. मराठवाड़ा
26. विदर्भ
27. छत्तीसगढ़
28. तटीय आंध्र प्रदेश और यनम
29. तेलंगाना
30. रायलसीमा
31. तमिलनाडु, पुडुचेरी और कराईकल
32. तटीय कर्नाटक
33. आंतरिक उत्तरी कर्नाटक
34. आंतरिक दक्षिणी कर्नाटक
35. केरल और माहे
36. लक्षद्वीप



1. Andaman & Nicobar Islands
2. Arunachal Pradesh
3. Assam & Meghalaya
4. Nagaland, Manipur, Mizoram & Tripura
5. Sub-Himalayan West Bengal & Sikkim
6. Gangetic West Bengal
7. Odisha
8. Jharkhand
9. Bihar
10. East Uttar Pradesh
11. West Uttar Pradesh
12. Uttarakhand
13. Haryana, Chandigarh & Delhi
14. Punjab
15. Himachal Pradesh
16. Jammu & Kashmir and Ladakh
17. West Rajasthan
18. East Rajasthan
19. West Madhya Pradesh
20. East Madhya Pradesh
21. Gujarat
22. Saurashtra
23. Konkan & Goa
24. Madhya Maharashtra
25. Marathwada
26. Vidarbha
27. Chhattisgarh
28. Coastal Andhra Pradesh & Yanam
29. Telangana
30. Rayalaseema
31. Tamilnadu, Puducherry & Karaikal
32. Coastal Karnataka
33. North Interior Karnataka
34. South Interior Karnataka
35. Kerala & Mahe
36. Lakshadweep

## SPATIAL DISTRIBUTION (% of Stations reporting)

% Stations	Category	% Stations	Category
76-100	Widespread (WS/Most Places)	26-50	Scattered (SCT/A Few Places)
51-75	Fairly Widespread (FWS/Many Places)	1-25	Isolated (ISOL)

- |                      |                      |              |
|----------------------|----------------------|--------------|
| Fog                  | Heavy Snow           | Cold Wave    |
| Heavy Rain           | Dust Storm           | Cold Day     |
| Very Heavy Rain      | Heat Wave            | Ground Frost |
| Extremely Heavy Rain | Warm Night           |              |
| Thunder & Lightning  | Hot Day              |              |
| Hailstorm            | Hot & Humid          |              |
| Dust Raising Winds   | Strong Surface Winds |              |

### COLOUR CODED WARNING

No Warning (No Action)
Watch (Be Aware)
Alert (Be Prepared To Take Action)
Warning (Take Action)

### Probabilistic Forecast

Terms	Probability of Occurrence (%)
Unlikely	< 25
Likely	25 - 50
Very Likely	50 - 75
Most Likely	> 75

\* Red colour warning does not mean "Red Alert", Red colour warning means "Take Action".  
Forecast and Warning for any day is valid from 0830 hours IST of day till 0830 hours IST of next day.  
For more details, kindly visit <https://mausam.imd.gov.in> or contact: 011-2434-4599  
(Service to the Nation since 1875)

### DEFINITION/CRITERIA

<b>Rain/ Snow *</b>	<p><b>Heavy:</b> 64.5 to 115.5 mm/cm *</p> <p><b>Very Heavy:</b> 115.6 to 204.4 mm/cm*</p> <p><b>Extremely Heavy:</b> &gt; 204.4 mm/cm *</p>
<b>Heat Wave</b>	<p>When maximum temperature of a station reaches <math>\geq 40^{\circ}\text{C}</math> for plains and <math>\geq 30^{\circ}\text{C}</math> for hilly regions</p> <p><b>(a) Based on Departure from normal</b></p> <p><b>Heat Wave:</b> Maximum Temperature Departure from normal <math>4.5^{\circ}\text{C}</math> to <math>6.4^{\circ}\text{C}</math>.</p> <p><b>Severe Heat Wave:</b> Maximum Temperature Departure from normal <math>\geq 6.5^{\circ}\text{C}</math></p> <p><b>(b) Based on Actual maximum temperature</b></p> <p><b>Heat Wave:</b> When actual maximum temperature <math>\geq 45^{\circ}\text{C}</math>.</p> <p><b>Severe Heat Wave:</b> When actual maximum temperature <math>\geq 47^{\circ}\text{C}</math></p> <p><b>(c) Criteria for heat wave for coastal stations</b></p> <p>When maximum temperature departure is <math>&gt;4.5^{\circ}\text{C}</math> from normal. Heat Wave may be described provided maximum temperature <math>\geq 37^{\circ}\text{C}</math>.</p>
<b>Warm Night</b>	<p><b>When maximum temperature remains <math>40^{\circ}\text{C}</math></b></p> <p><b>Warm Night:</b> When minimum temperature departure <math>4.5^{\circ}\text{C}</math> to <math>6.4^{\circ}\text{C}</math>.</p> <p><b>Severe Warm Night:</b> When minimum temperature departure <math>&gt;6.4^{\circ}\text{C}</math>.</p>
<b>Cold Wave</b>	<p>When minimum temperature of a station <math>\leq 10^{\circ}\text{C}</math> for plains and <math>\leq 0^{\circ}\text{C}</math> for hilly regions.</p> <p><b>(a) Based on departure</b></p> <p><b>Cold Wave:</b> Minimum Temperature Departure from normal <math>-4.5^{\circ}\text{C}</math> to <math>-6.4^{\circ}\text{C}</math>.</p> <p><b>Severe Cold Wave:</b> Minimum Temperature Departure from normal <math>\leq -6.5^{\circ}\text{C}</math></p> <p><b>(b) Based on actual Minimum Temperature (for Plains only)</b></p> <p><b>Cold Wave :</b> When Minimum Temperature is <math>\leq 4.0^{\circ}\text{C}</math></p> <p><b>Severe Cold Wave:</b> When Minimum Temperature is <math>\leq 2.0^{\circ}\text{C}</math></p> <p><b>(c) For Coastal Stations</b></p> <p>When Minimum Temperature departure is <math>\leq -4.5^{\circ}\text{C}</math> &amp; actual Minimum Temperature is <math>\leq 15^{\circ}\text{C}</math></p>
<b>Cold Day</b>	<p>When minimum temperature of a station <math>\leq 10^{\circ}\text{C}</math> for plains and <math>\leq 0^{\circ}\text{C}</math> for hilly regions</p> <p><b>Based on departure</b></p> <p><b>Cold Day:</b> Maximum Temperature Departure from normal <math>-4.5^{\circ}\text{C}</math> to <math>-6.4^{\circ}\text{C}</math>.</p> <p><b>Severe Cold Day:</b> Maximum Temperature Departure from normal <math>\leq -6.5^{\circ}\text{C}</math></p>
<b>Fog</b>	<p><b>Phenomenon of small droplets suspended in air and the horizontal visibility <math>&lt; 1\text{km}</math></b></p> <p><b>Moderate Fog:</b> When the visibility between 500-200 metres</p> <p><b>Dense Fog:</b> when the visibility between 50- 200 metres</p> <p><b>Very Dense Fog:</b> when the visibility <math>&lt; 50</math> metres</p>
<b>Thunderstorm</b>	<p>Sudden electrical discharges manifested by a flash of light (Lightning) and a sharp rumbling sound (thunder)</p>
<b>Dust/Sand Storm</b>	<p>An ensemble of particles of dust or sand energetically lifted to great heights by a strong and turbulent wind.</p>
<b>Frost</b>	<p><b>Ice deposits on ground</b></p> <p>Air temperature <math>\leq 4^{\circ}\text{C}</math> ( over Plains)</p>
<b>Squall</b>	<p><b>A strong wind that rises suddenly, lasts for atleast 1 minute.</b></p> <p><b>Moderate:</b> Wind speed 52-61 kmph</p> <p><b>Severe:</b> Wind speed 62-67 kmph</p> <p><b>Very Severe:</b> Wind speed <math>&gt;67</math> kmph</p>
<b>Sea State</b>	<p><b>Effect of various waves in the sea over specific area</b></p> <p><b>Rough to very rough:</b> Wind speed 41-62 kmph (22-33 knots) &amp; Wave height 2.5-6 metre</p> <p><b>High to very high:</b> Wind speed 63-117 kmph ( 34-63 knots) &amp; Wave height 6-14 metre</p> <p><b>Phenomenal:</b> Wind speed <math>&gt;117</math> kmph (<math>&gt;63</math> knots) &amp; Wave height <math>&gt;14</math> metre</p>
<b>Cyclone</b>	<p><b>Cyclonic Storm:</b> Wind speed 62-67 kmph (34-47 knots)</p> <p><b>Severe Cyclonic Storm:</b> Wind speed 88-117 kmph (48-63 knots)</p> <p><b>Very Severe Cyclonic Storm:</b> Wind speed 118-165 kmph (64 - 89 knots)</p> <p><b>Extremely Severe Cyclonic Storm:</b> Wind speed 166-220 kmph (90 -119 knots)</p> <p><b>Super Cyclone Storm:</b> Wind speed <math>&gt;220</math> kmph (<math>&gt;119</math> knots)</p>

\* Red colour warning does not mean "Red Alert", Red colour warning means "Take Action".  
Forecast and Warning for any day is valid from 0830 hours IST of day till 0830 hours IST of next day.  
For more details, kindly visit <https://mausam.imd.gov.in> or contact: 011-2434-4599  
(Service to the Nation since 1875)

**Hot and Humid:** When maximum temperatures remain  $3^{\circ}\text{C}$  above normal along with the above normal relative humidity.